

**FLOORPLAN OPTIONS**

We personalise our floorplans. Talk to us about our huge range of ready-to-go design options.

**Facades available:**

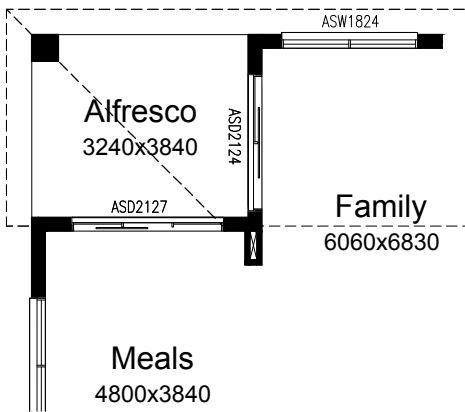
Barrine, Mackay, Corella,	
Lonsdale, Wentworth, McKenzie	
Blanche, Selina	
<b>Overall home width</b>	<b>12.95m</b>
<b>Overall home length</b>	<b>17.39m</b>

Residence	293.7m <sup>2</sup>	31.6sq
Garage	37.8m <sup>2</sup>	4.1sq
Porch	4.3m <sup>2</sup>	0.5sq
Alfresco	12.4m <sup>2</sup>	1.4sq
<b>Total</b>	<b>348.3m<sup>2</sup></b>	<b>37.5sq</b>

Listed details based on Barrine facade floorplan (illustrated)

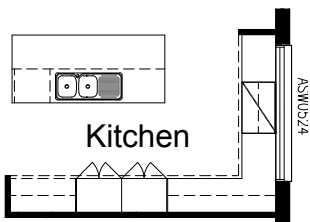
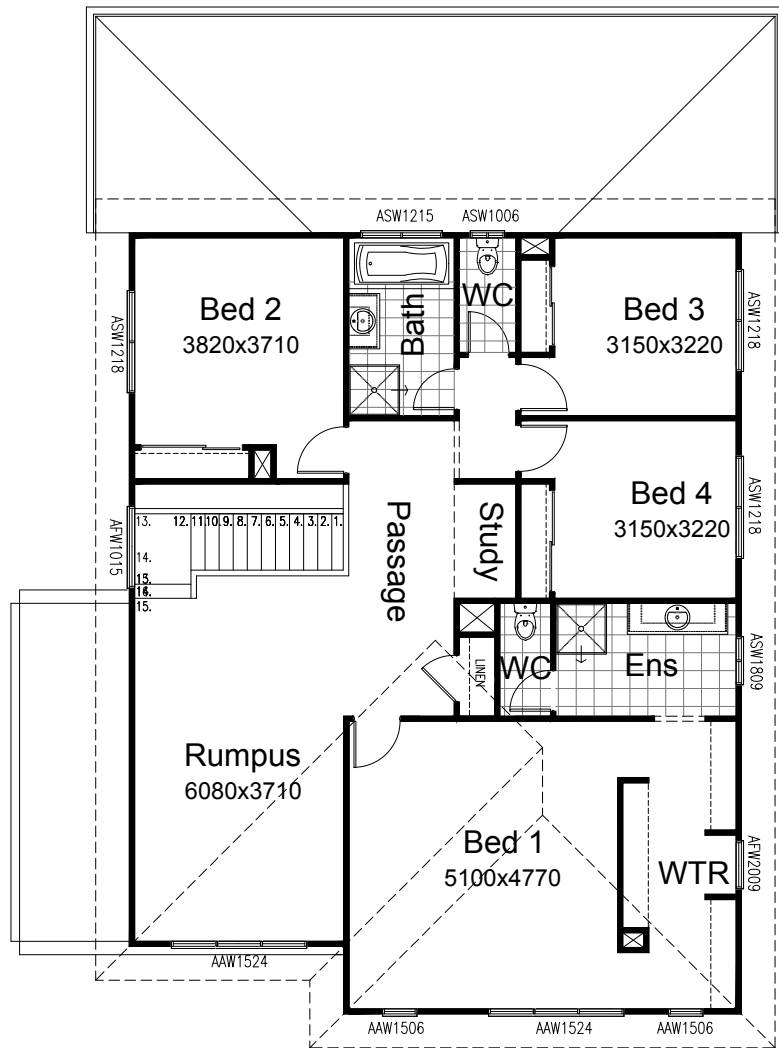
\*Copyright conditions. All photos and illustrations are representative only. Floor plans and specifications may be varied by Burbank without notice, the dimensions are diagrammatic only and a Building Contract with final drawings will display correct dimensions and detail. All designs are the property of Burbank and must not be used, reproduced, copied or varied, wholly or in part without written permission from an authorised Burbank representative. Copyright Burbank Australia (NSW) Pty Ltd. ABN 88 610 822 770. NSW BL 295627C ACT BL 2016566.

**Call 13 BURBANK**  
**Visit [burbank.com.au](http://burbank.com.au)**



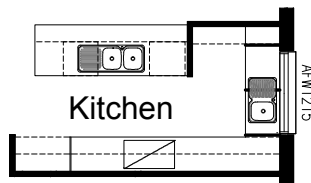
**OPTION IP1**

Provide alternate First Floor Plan including plumbing stack to Ground Floor Meals



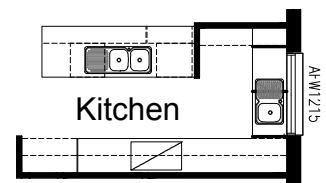
**OPTION K1**

Provide 'L' shape Kitchen upgrade and delete WIP to suit. Provide additional 1no. laminated MW provision with pot drawer below, 2no. 800mm base cupboards, 1no. laminated DW provision, 1no. 450mm drawers, 1no. 1050mm blind carcass with 1no. 600mm door, 1no. 700mm base cupboard, 1no. 900mm base cupboard, 2no. 800mm laminated tall pantry cupboards, 1no. laminated open shelf above refrigerator space, 2no. 700mm overhead cupboards, 1no. 450mm overhead cupboard, 1no. 900mm overhead cupboard with retractable rangehood with fixed doors and 1no. 514mm x 2400mm fixed window with no bottom reveal in lieu of standard 1no. 1800mm x 850mm aluminium sliding window with additional tiled slashback and benchtop to suit.



**OPTION K2**

Provide Kitchen/WIP upgrade with 3no. 900mm base cupboards, 1no. 350mm base cupboard, 2no. 900mm overhead cupboards, 1no. blind corner base cupboard with 350mm door, 1no. 350mm overhead cupboard, 1no. laminated open shelf above refrigerator space, 1no. 600mm laminated overhead open shelf, 1no. 450mm drawers, 1no. laminated dishwasher provision, 1no. laminated microwave provision, 2no. 800mm base cupboards, 1800(h) laminated shelving, 1no. 1200mm x 1450mm aluminium fixed window with no bottom reveal in lieu of standard to WIP, 1no. single bowl sink to WIP, 900mm deep island bench in lieu of standard 800mm and additional tiled splash back and bench top to suit.

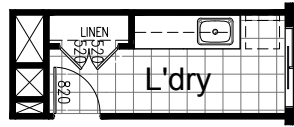


**OPTION K3**

Provide additional 1no. 800mm base cupboard with 1no. 800mm laminated open shelf above to rear of island bench. NOTE: This Option can only be used with Option K2.

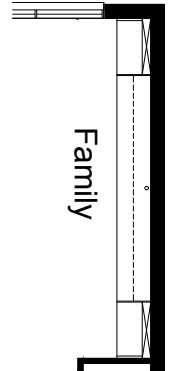
**OPTION LD1**

Provide Laundry Option by reducing Linen by 200mm and provide double 520mm doors in lieu of 620mm. Provide additional inset laminated trough, 2no. 900mm base cupboards, 2no. 900mm overhead cupboards and additional tiled splash back and bench top to suit.



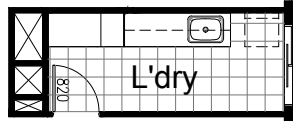
**OPTION IP5**

Provide in built entertainment unit including removal of 2No. 1800x850mm aluminium sliding windows, relocate 1No. Family window 480mm toward Alfresco and provide 2No. drawer and door units, 5No. TV cabinet units with 32mm laminated benchtop and single cable duct to center carcass and 5No. overhead cabinet units with lift up doors.



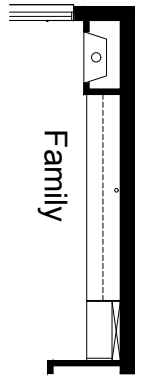
**OPTION LD2**

Provide Laundry Option by removing Linen and Provide additional inset laminated trough, 2no. 900mm base cupboards, 2no. 900mm overhead cupboards, 1No. 900mm Linen cabinet, 1No. 400mm broom cupboard and additional tiled splash back and bench top to suit.



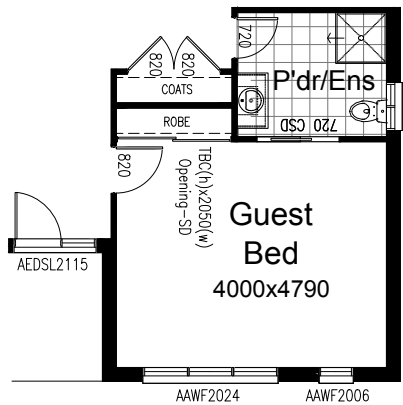
**OPTION IP6**

Provide in built entertainment unit including removal of 2No. 1800x850mm aluminium sliding windows, relocate 1No. Family window 480mm toward Alfresco and provide 1No. drawer and door units, 4No. 900mm TV cabinet units with 32mm laminated benchtop and single cable duct to center carcass, 4No. 900mm overhead cabinet units with lift up doors and Jetmaster 3X series gas fireplace 480mm above FFL with plasterboard box out.



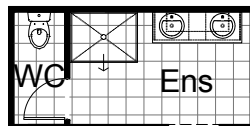
**OPTION IP2**

Provide Guest Bedroom option by increasing Powder by 600mm and reduce Guest. Increase Powder by 300mm and reduce Coats. Provide robe to Guest including 450mm shelf and hanging rail and 1550mm wide gyprock sliding doors. Provide additional 820mm flush panel door to Guest and additional 720mm cavity sliding door to Powder including additional 900x900mm tiled shower base to powder and 1027x850mm aluminium sliding window in lieu of standard.



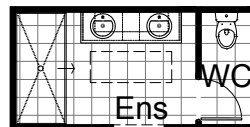
**OPTION ENS1**

Provide Ensuite upgrade including 1582mm vanity unit with double basin in lieu of standard and 1200x900mm tiled shower base in lieu of 900x900mm.



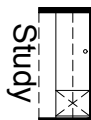
**OPTION ENS2**

Provide Ensuite upgrade including double basin to existing vanity unit, relocate WC and provide 1200x850 sliding window in lieu of standard, provide 2000x900mm tiled shower base in lieu of 900x900mm including relocate Ensuite entry opening to suit. Provide 1400x550mm fixed Velux skylight with painted plaster shaft.



**OPTION IP3**

Provide in built Study desk with 450mm floating shelf unit, 600mm deep laminated benchtop with cable duct and 2No. 300mm deep floating shelves  
NOTE: not available with Option IP1



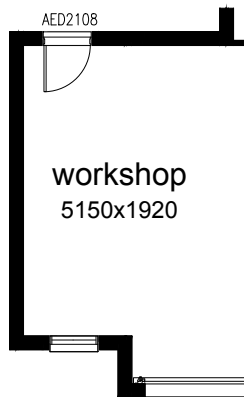
**OPTION G1**

Provide extension to Garage to create Storage area including additional 1800mm x 850mm aluminium fixed window. Increases area by 9.45m<sup>2</sup>. Increases width by 1680mm.



**OPTION G2**

Provide extension to Garage to create Workshop area including additional 1800mm x 850mm aluminium fixed window. Increases area by 10.81m<sup>2</sup>. Increases width by 1920mm.



**OPTION G3**

Provide triple car Garage including additional Garage door as per colour selection. Provide pitched roof over garage to to all facades including additional downpipe. Increases width by 3600mm. Increases area by 24.15m<sup>2</sup>.

